

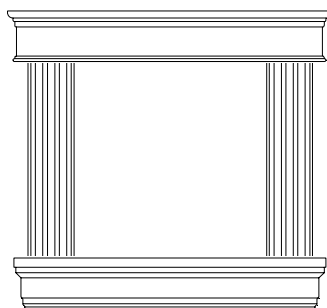
**SAVES
TIME!**

easyTrim™
by **NEWOOD®**

**SAVES
MONEY!**

Installation Instructions for Window Casing with Architrave

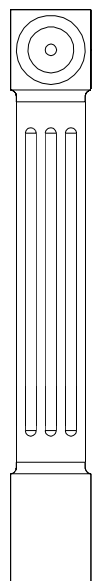
To trim an opening, you only need
(1) Architrave, (2) Side Mouldings, (1) Sill



ROSETTE

FLUTE

PLINTH



Rosette, Flute and Plinth all in
one! No more struggling with
separate pieces, use our
three-in-one

easyTrim™

- ~ For new construction or remodeling
- ~ A low-cost way to beautify your home
- ~ Average installation in less than 20 minutes !

- Double-coated primed MDF
- Accepts oil or water based paints
- Use nails and/or construction adhesive
- Sand lightly before painting

MADE IN USA

manufactured by **NEWOOD®**

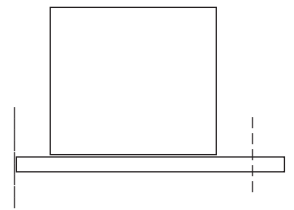
NEWOOD is a registered trademark of
NEWOOD Display Fixture Mfg. Company, Oregon

Patent Pending

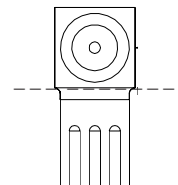
INSTALLING **easyTrim™**

1. Install the **WINDOW SILL EXTENSION** first by measuring the window opening, plus the widths of each side window side trim plus the desired amount of sill overhang you want. Cut the sill to that length. Center under window opening and install.
2. Cut off the rosettes from the **WINDOW SIDE PIECES** as close as possible to the rosette.
3. Turn the window side piece up-side-down (plinth up), measure 1/4" above window opening, mark on the side piece and cut.
4. Install the window sides leaving a 1/4" margin (space) between the window opening and the edge of the trim.
5. To install the **ARCHITRAVE HEADER**, measure the distance from the outside edges of the trim, then add the desired amount of overhang you want to each side and cut the Architrave header to that length.
6. Center the Architrave header over the side pieces and install.

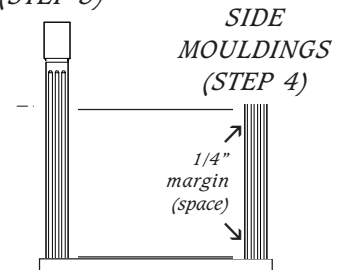
*WINDOW SILL EXTENSION
(STEP 1)*



*SIDE MOULDINGS
(STEP 2)*



*SIDE MOULDINGS
(STEP 3)*



Putty nail holes and joints as needed, light sand, paint.

NOTE: When installing, If you do not use a nail gun we recommend that you pre-drill nail holes.

*ARCHITRAVE
HEADER
(STEP 5)*

*ARCHITRAVE
HEADER
(STEP 6)*

